

BUEHLER®

MetaServ® 3000 TWIN GRINDER-POLISHERS & Vector® LC 250 POWER HEADS

- Reliable and Economical
- Variable Speed Platens
- Corrosion Resistant, Molded Base
- Bright LED Power Indicator
- Adjustable Water Flow Nozzle
- Dual Input Voltage
- Quiet Belt Drive Operation
- Built-in Circuit Protection
- Upgrade to Semi-Automatic Preparation with Vector® LC 250 Power Head



Reliable and Economical Family of Metallographic Grinder-Polishers



MetaServ® 3000 Features

The MetaServ 3000 Twin Grinder-Polisher offers a combination of performance, economy and reliability for most microstructural analysis applications. Designed for manual grinding and polishing, as well as for semi-automatic operation when combined with a Vector® LC 250 Power Head.

The MetaServ 3000 features an infinitely variable speed control of 50 to 500 rpm. Select between 8" (203 mm) or 10" (254 mm) diameters. A built-in bowl wash and drain flushes out particles and minimizes build-up of grinding-polishing debris. The adjustable water flow nozzle can be positioned anywhere over the platen and the flow control valve governs the amount of water dispensed.

The included aluminum platens provide a flat, hard grinding-polishing surface for any media. A molded protective housing provides corrosion and impact-resistance. The replaceable bowl splash guard prevents accidental spraying and can be removed for easy platen changing.

The easy-to use front control panel consists of water on/off, platen on/off, and variable speed control knob. A bright LED indicator displays when power is on. Safety features include built-in circuit protection and low voltage controls.

Vector® LC 250 Features

The Vector® LC 250 Power Head upgrades the MetaServ Grinder-Polishers from manual into semi-automatic operation, increasing specimen consistency.

The Vector LC 250 Power Head is an easy to operate, economical power head with basic features for low volume applications. Single sample pressure prepares one to four samples and allows pressure to be tailored for each sample. It has mechanical sample loading and head positioning which does not require the use of air pressure. The front control panel features simple to operate analog controls including an analog pressure setting display and power switch.



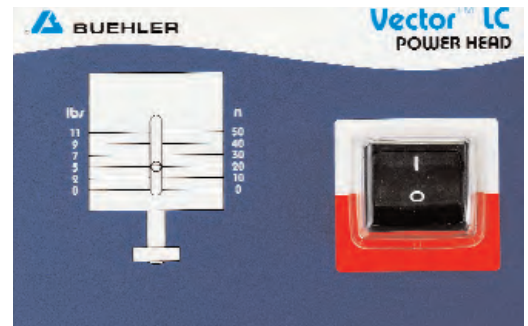
The Vector® LC Power Head is an economical option to convert the MetaServ® 3000 Grinder-Polisher into a semi-automatic single force preparation system.



The MetaServ 3000, without Vector® LC Power Head, is designed for manual grinding-polishing applications.



The MetaServ® 3000 front panel feature Water On/Off Control, Platen On/Off Control, Variable Platen Speed RPM Control and a green LED Power On Indicator.



The Vector® LC front panel features an On/Off Power Switch and a Pressure Display Setting.



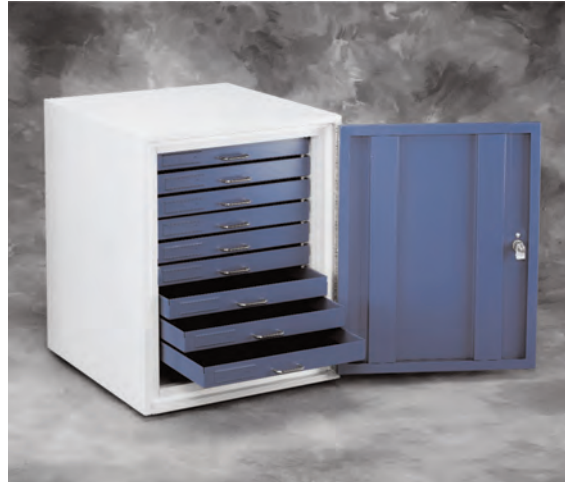
The Vector® LC Power Head features mechanical single sample preparation from one to four samples.



The power head is easily moved to the side or positioned on the platen edge and locked in place.



A protective bowl lids keeps platens surfaces dust and contaminate free when not in use.



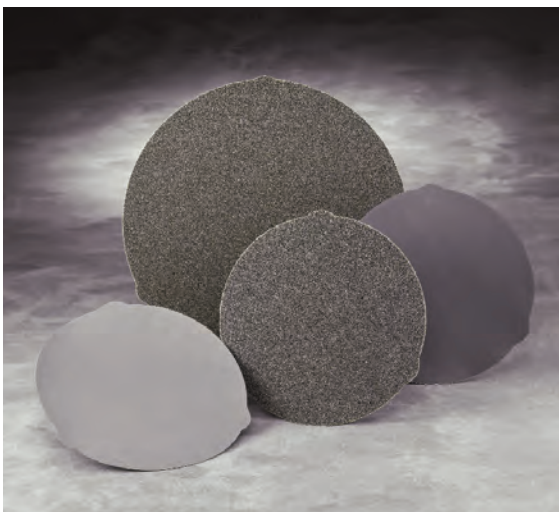
The Desiccator Storage Cabinet (20-1445) provides a moisture free storage environment for mounted specimens.



TechMet® tables and furniture (16-1499 shown) provide sturdy and decorative areas for placement of the MetaServ® 3000 and other Buehler laboratory equipment.



Single force specimen holders are available for use with 1" - 1 1/2" (25 mm - 40 mm) diameter samples.



Plain and PSA backed discs are available for MetaServ® 3000 Grinder-Polishers.



MetaDi® Diamond Suspensions and pastes offer superior polishing results and are available in a variety of diamond sizes.

Specifications

MetaServ® 3000 Grinder-Polishers

Power:

115/230 VAC, 50/60 Hz, 1 phase

Platen Diameter:

8" (203 mm) or 10" (254 mm)

Platen Speed:

50 to 500 rpm, continuously variable

Controls:

On/Off, Motor, Water, Platen Speed

Motor:

¼ Hp (200 Watt)

Water Supply Pressure:

14-28 psi (1-2 bar)

Water Supply Flow:

0.5 gallon/min. (2 liters/min.)

Ambient Operating:

Temperature: 40-104 °F (5-40° C)

Humidity: 30-90% Relative Humidity

Approval Standards:

CE Marked, EC Applicable Directives

Weight:

75 lbs (34 kg)

Dimensions:

Unit	Width	Depth	Height
Twin	25.6" (650 mm)	25.9" (658 mm)	12.7" (322 mm)

Vector® LC 250 Power Heads

Power:

115/230 VAC, 50/60 Hz, 1 phase

Head Speed:

60 rpm

Sample Force:

0 to 11 lbs (0 to 50 N) per sample

Sample Sizes:

1", 1¼", 1½", 25 mm, 30 mm, 40 mm

Sample Capacity:

1 to 4

Approval Standards:

CE Marked, EC Applicable Directives

Ambient Operating:

Temperature: 40-104 °F (5-40° C)

Humidity: 30-90% Relative Humidity

Weight:

57lbs (26kg)

Dimensions:

Width	Depth	Height
7½" (190 mm)	15" (381 mm)	16" (406 mm)

Ordering Information

MetaServ® 3000 Grinder-Polishers

The MetaServ 3000 Grinder-Polishers include aluminum platens, splash rings, bowl covers, paper holding bands, cloth clamps, electrical power cord and operating instructions.

Item Number	No. of Platens	Platen Size
95-2930	Dual	8" (203 mm)
95-2940	Dual	10" (254 mm)

Vector® LC 250Power Heads

Vector LC Power Heads include digital timer, electrical power cord and operating instructions.

60-10059-115 Vector LC 250 Power Head,
115 VAC, 50/60 Hz, 1 phase

60-10059-230 Vector LC 250 Power Head
230 VAC, 50/60 Hz, 1 phase

MetaServ® 3000 with Vector® LC 250Power Head, assembled

95-2935-115 8", Dual MetaServ, 115V Vector LC 250

95-2935-230 8", Dual MetaServ, 230V Vector LC 250

95-2945-115 10", Dual MetaServ, 115V Vector LC 250

95-2945-230 10", Dual MetaServ, 230V Vector LC 250

Accessories

Platens

40-4061 Platen, 8" (203 mm), Aluminum

40-0500 Platen, 10" (254 mm), Aluminum

Single Force Specimen Holders with Retaining Rings:

60-10060 4 x 1" Samples

60-10061 4 x 1¼" (32 mm) Samples

60-10062 4 x 1½" (38 mm) Samples

60-10063 4 x 25 mm Samples

60-10064 4 x 30 mm Samples

60-10065 4 x 40 mm Samples

60-3007 Retaining Rings (Set of 12 in assorted sizes)

60-9005 Drive Adapter (required)

Other Accessories:

30-2008 Paper Holding Band, 8" (203mm)

95-2825 Paper Holding Band, 10" (254mm)

69-1583 26 x 48 mm Glass Slide Holder

40-2058 Cloth Clamp, 8" (203mm)

95-2826 Cloth Clamp, 10" (254mm)

(60-10062 Holder Required)

For a complete listing of Buehler consumable supplies, please refer to Buehler's Quality At Work - Consumables Buyers Guide. Buehler continuously makes product improvements; therefore, technical specifications are subject to change without notice.

© 2008 BUEHLER Printed in U.S.A. PDF0208 FN01322

*For metallurgical equipment produced by BUEHLER USA



BUEHLER

BUEHLER – Worldwide Headquarters
41 Waukegan Road • P.O. Box 1
Lake Bluff, Illinois 60044-1699 USA
Tel: 847/295-6500 • Fax: 847/295-7979
Sales: 1/800/BUEHLER • 1/800/283-4537
Web Site: <http://www.buehler.com>
Email: info@buehler.com

BUEHLER GMBH - European and MESA Headquarters

In der Steele 2 • 40599 Düsseldorf
Postfach 16 03 55 • 40566 Düsseldorf
Telefon: (49) 211 974100 • Telefax: (49) 211 9741079
Web Site: <http://www.buehler-met.de>
Email: info@buehler-met.de

BUEHLER FRANCE

Téléphone: 0800 89 73 71
Télécopie: 0800 88 05 27
Web Site: <http://www.buehler.fr>
Email: info@buehler.fr

BUEHLER UK

Telephone: 0800 707 6273
Fax: 0800 707 6274
Web Site: <http://www.buehler.co.uk>
Email: sales@buehler.co.uk

BUEHLER CANADA

10 Carlow Court, Unit #2
Whitby, Ontario L1N 9T7
Telephone: 1-800-268-3593
Email: info@buehler.ca

BUEHLER, ASIA-PACIFIC

5/F Vogue Centre
696 Castle Peak Road
Lai Chi Kok, Kowloon
Hong Kong, SAR, China
Telephone: (852) 2307 0909
Fax: (852) 2307 0233